

PLAT NO. 10 SAILFISH POINT P.U.D.

LYING IN FRACTIONAL SECTION 8
TOWNSHIP 38 SOUTH, RANGE 42 EAST
MARTIN COUNTY, FLORIDA

JUNE, 1984

SHEET 2 OF 2

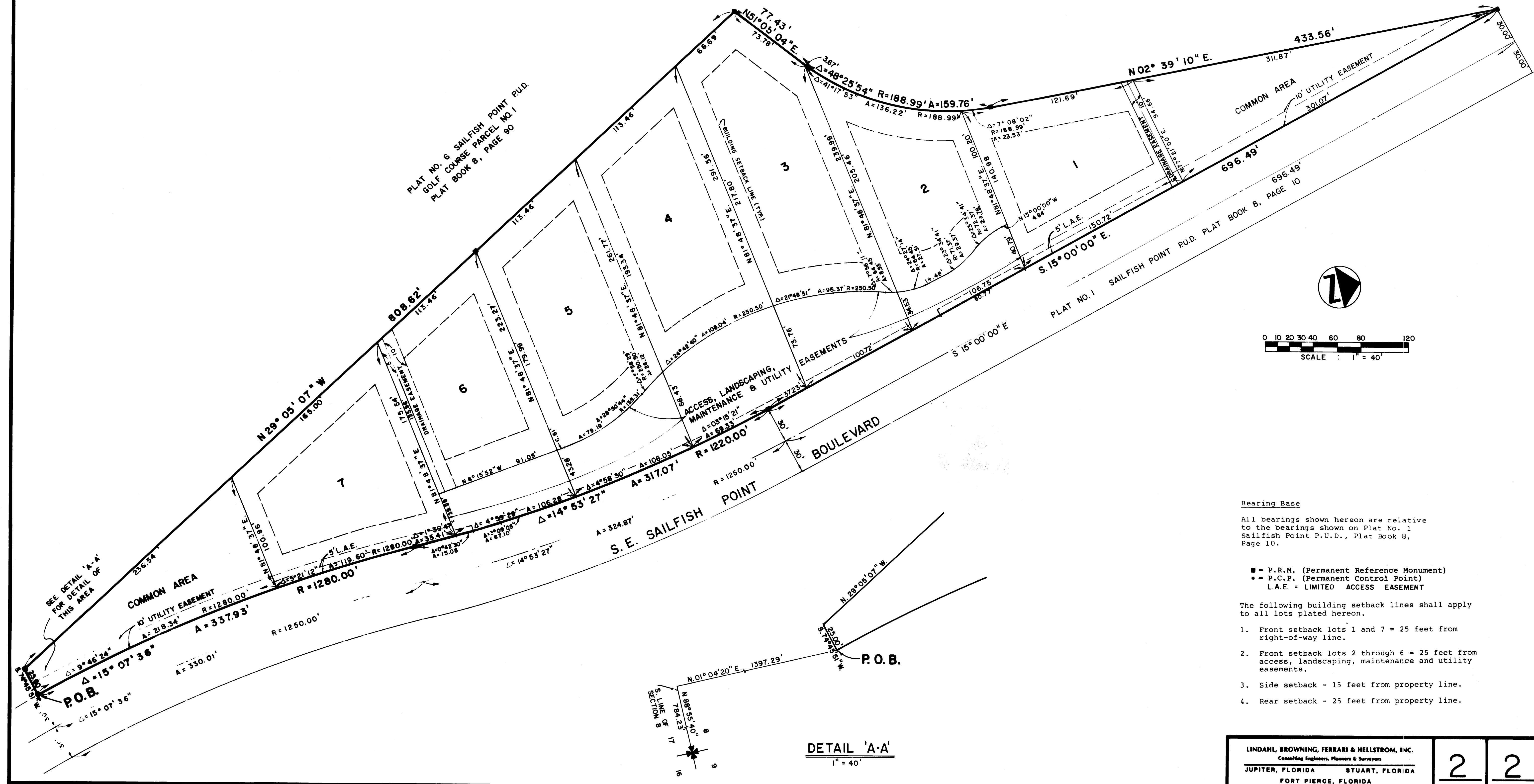
I, Louise V. Isaacs,
Clerk of the Circuit
Court of Martin County,
Florida, hereby certify
that this Plat was filed
for record in Plat Book
9, Page 73, Martin
County, Florida, Public
Records, this day
of _____, 1984.

Louise V. Isaacs, Clerk
Circuit Court
Martin County, Florida

By: _____
Deputy Clerk

File No. _____

(Circuit Court Seal)



Bearing Base

All bearings shown hereon are relative to the bearings shown on Plat No. 1 Sailfish Point P.U.D., Plat Book 8, Page 10.

■ = P.R.M. (Permanent Reference Monument)
● = P.C.P. (Permanent Control Point)
L.A.E. = LIMITED ACCESS EASEMENT

The following building setback lines shall apply to all lots plated hereon.

1. Front setback lots 1 and 7 = 25 feet from right-of-way line.
2. Front setback lots 2 through 6 = 25 feet from access, landscaping, maintenance and utility easements.
3. Side setback - 15 feet from property line.
4. Rear setback - 25 feet from property line.

DETAIL 'A-A'
1" = 40'

LINDAHL, BROWNING, FERRARI & HELLSTROM, INC. Consulting Engineers, Planners & Surveyors		2	2
JUPITER, FLORIDA	STUART, FLORIDA		
FORT PIERCE, FLORIDA			